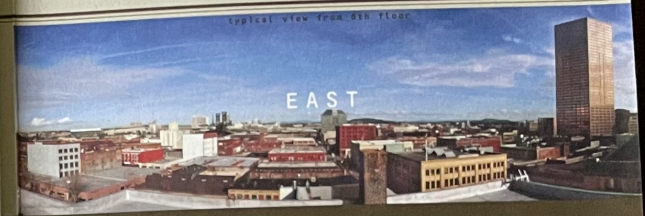


where it all happens
historic roots
think location
cultural epiphanies
emerging neighborhoods

- NORTHWEST 7
- THE PEARL 2
- PARK BLOCKS 3
- OLD TOWN 4
- DOWNTOWN 5
- ROSE QUARTER 6
- THE EASTSIDE 7

welcome home

Overlooking the North Park Blocks, an exceptional neighborhood rich in contrasts between art and industry, city and nature, we have converted a former artisan complex into residential lofts. A renovation where the layers of history and urban living merge. Luminous interiors, spacious planning, and a refined materials palette. A modern landmark centered within walking range of every desirable destination: Downtown, Old Town, the Pearl, Northwest, the Park Blocks and the Mighty Willamette. Your daily activities will expand to include naps under the shade of trees, chance encounters with long-lost friends, and the frequent culinary epiphany. We invite you to Live amongst it all.



a home, an investment
npl

68 designed loft units at 700 to 1700 sq ft available. high ceilings, open planning, european tilt & turn windows, wide balconies, custom fixtures, industrial surfaces, energy efficient stainless steel appliances, tenant roof terrace, secured parking, and the views...hood to the hills. architecture is everything. a commitment to craft



think architecture

FOR MORE INFORMATION REGARDING NORTH PARK LOFTS
PH. 503.241.1500 OR KEVIN@LIVE-URBAN.COM

LIVE-URBAN.COM

LIVE AMONGST

IT ALL

LIVE-URBAN.COM

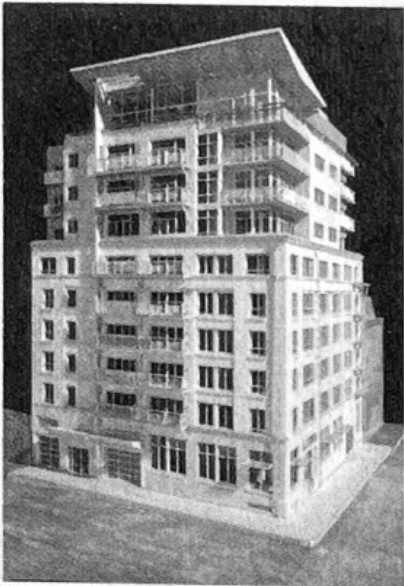
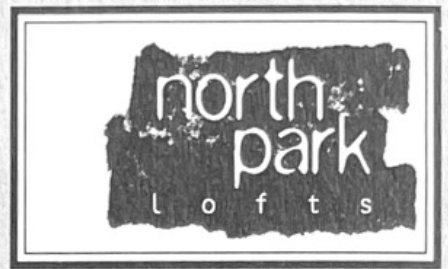
LIVE AMONGST

IT ALL

LIVE-URBAN.COM

unit prices
north park lofts

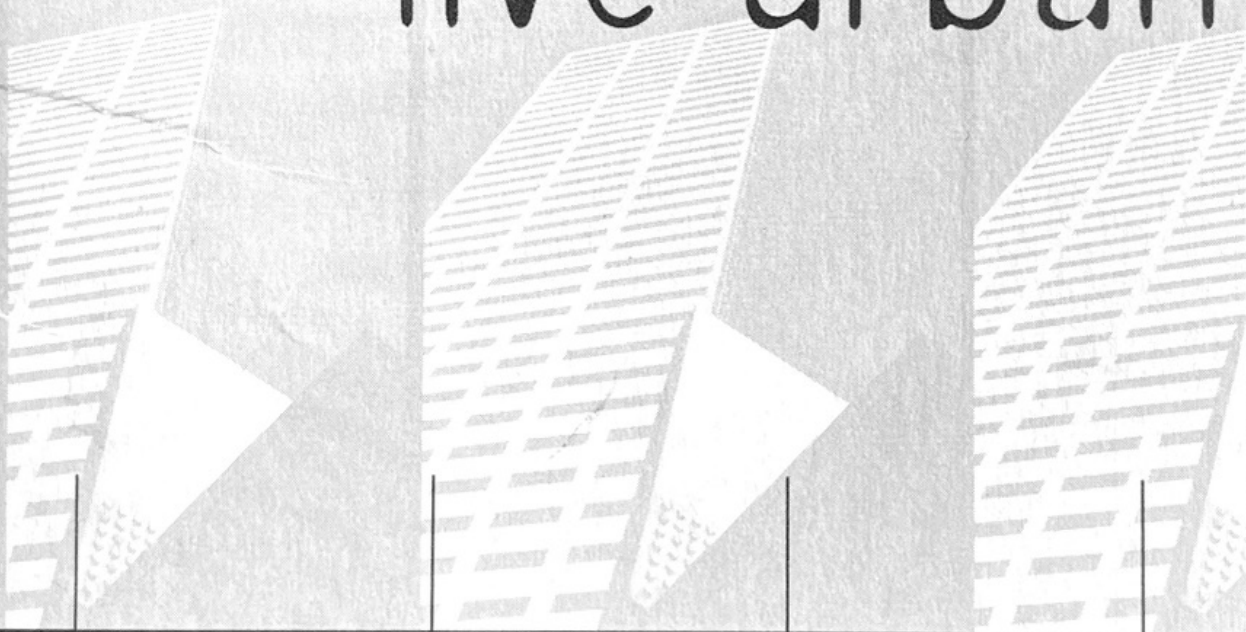
[unit plans]
north park lofts



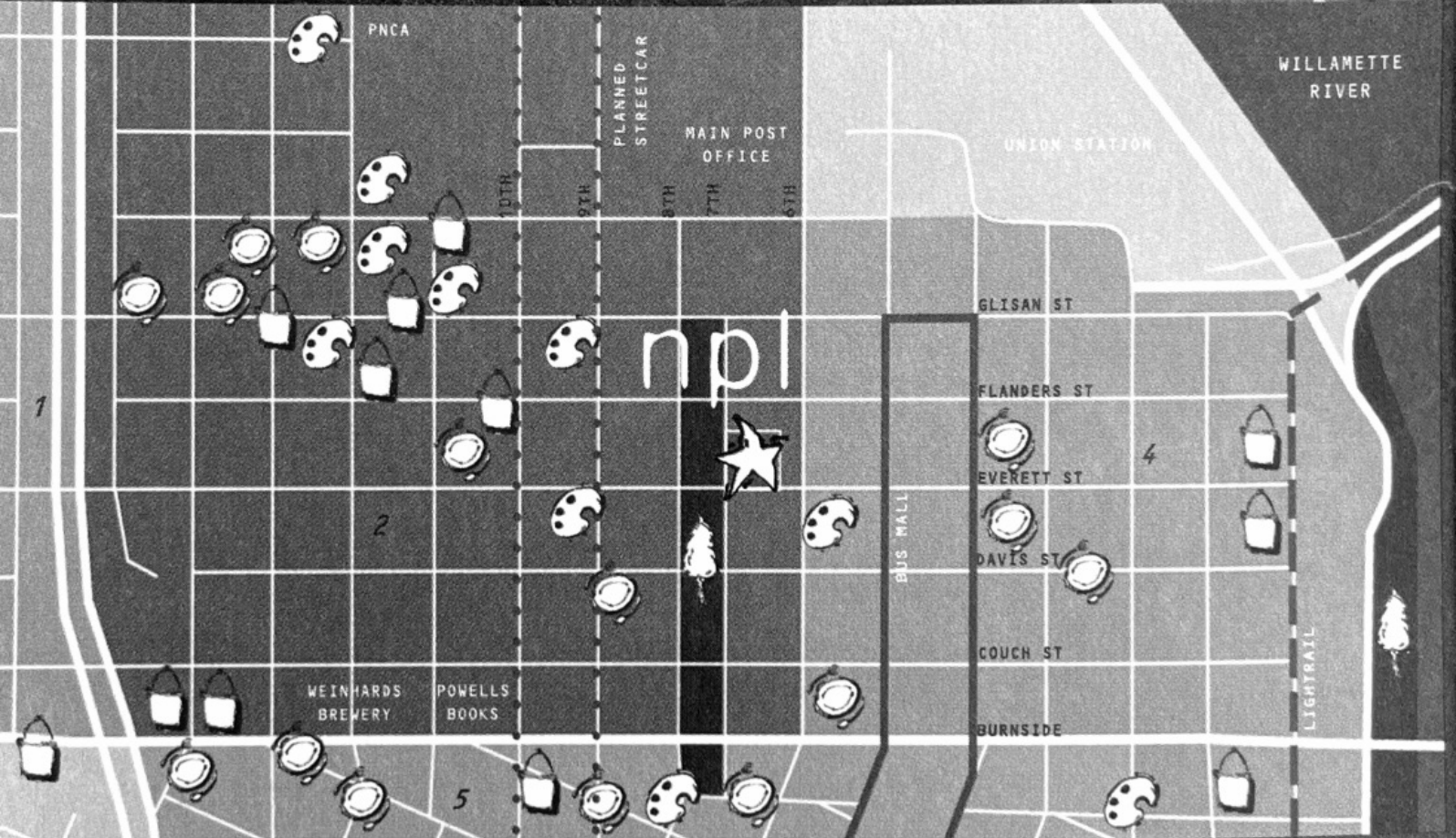
npl

LIVE AMONGST IT ALL

live urban



typical view from 6th floor



where it all happens
historic roots
think location
cultural epiphanies
emerging neighborhoods

the neighborhood

- NORTHWEST 1
- THE PEARL 2
- PARK BLOCKS 3
- OLD TOWN 4
- DOWNTOWN 5
- ROSE QUARTER 6
- THE EASTSIDE 7



welcome home

Overlooking the North Park Blocks, an exceptional neighborhood rich in contrasts between art and industry, city and nature, we have converted a former artisan complex into residential lofts. A renovation where the layers of history and urban living merge. Luminous interiors, spacious planning, and a refined materials palette. A modern landmark centered within walking range of every desirable destination: Downtown, Old Town, the Pearl, Northwest, the Park Blocks and the Mighty Willamette. Your daily activities will expand to include naps under the shade of trees, chance encounters with long-lost friends, and the frequent culinary epiphany. We invite you to live amongst it all.

north
park

typical view from 6th floor

EAST



a home, an investment
npl

68 designed loft units at
700 to 1700 sq ft available.
high ceilings, open planning,
european tilt & turn windows,
wide balconies, custom fixtures,
industrial surfaces, energy
efficient stainless steel
appliances, tenant roof terrace,
secured parking, and the
views...hood to the hills.

architecture is everything

WOW.

think

a commitment to craft

architecture



FOR MORE INFORMATION REGARDING NORTH PARK LOFTS

PH.503.241.1500 OR KEVIN@LIVE-URBAN.COM

north park lofts unit pricing

Square Homeowner's					Square Homeowner's				
Unit	Plan	Feet	Total Unit Price	Assoc. Dues	Unit	Plan	Feet	Total Unit Price	Assoc. Dues
SECOND FLOOR					FOURTH FLOOR				
201	a	830	\$161,850	\$150	401	a	830	\$171,707	\$150
202	i	710	\$120,700	\$128	402	j	710	\$135,291	\$128
203	h	684	\$116,280	\$124	403	h	684	\$130,336	\$124
204	b	827	\$157,130	\$149	404	b	827	\$166,699	\$149
205	g	790	\$134,300	\$143	405	g	790	\$146,466	\$143
206	c	866	\$177,530	\$156	406	c	866	\$194,850	\$156
207	d	998	\$214,570	\$180	407	d	998	\$227,637	\$180
208	e	833	\$185,008	\$151	408	e	833	\$181,036	\$151
209	f	998	\$179,640	\$180	409	k	1064	\$203,184	\$192
THIRD FLOOR					FIFTH FLOOR				
301	a	830	\$166,706	\$150	501	a	830	\$176,858	\$150
302	j	710	\$131,350	\$128	502	j	710	\$142,000	\$128
303	h	684	\$126,540	\$124	503	h	684	\$136,800	\$124
304	b	827	\$161,844	\$149	504	b	827	\$171,700	\$149
305	g	790	\$142,200	\$143	505	g	790	\$158,000	\$143
306	c	866	\$186,190	\$156	506	c	866	\$207,840	\$156
307	d	998	\$221,007	\$180	507	d	998	\$234,466	\$180
308	e	833	\$175,763	\$151	508	e	833	\$186,467	\$151
309	k	1064	\$197,266	\$192	509	k	1064	\$209,279	\$192

63 parking spaces available at \$5000 per

Note: Prices and availability are subject to change without notice

Square Footage is an estimate based upon preliminary plans

Homeowner's Association Dues are an estimate

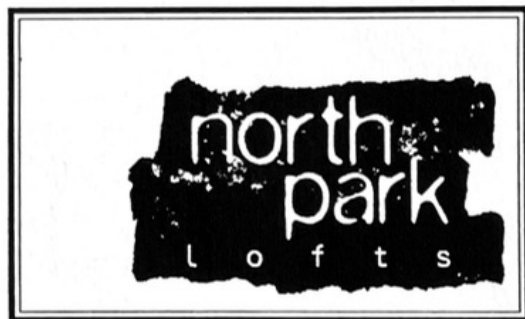
Price list effective May 29, 1998

Floors 7 thru 10 - prices quoted on a shell basis.

Square Homeowner's					Square Homeowner's				
Unit	Plan	Feet	Total Unit Price	Assoc. Dues	Unit	Plan	Feet	Total Unit Price	Assoc. Dues
SIXTH FLOOR					EIGHTH FLOOR				
601	a	830	\$182,600	\$150	801	aa	689	\$159,227	\$125
602	j	710	\$152,650	\$128	802	gg	937	\$231,043	\$169
603	h	684	\$147,060	\$124	803	bb	833	\$203,535	\$151
604	b	827	\$177,805	\$149	804	hh	1083	\$269,410	\$196
605	g	790	\$165,900	\$143	805	cc	854	\$209,090	\$154
606	c	866	\$220,830	\$156	806	dd	1000	\$257,707	\$181
607	d	998	\$241,500	\$180	807	ee	965	\$243,274	\$174
608	e	833	\$192,061	\$151	NINTH FLOOR				
609	k	1064	\$223,440	\$192	901	aa	689	\$169,562	\$125
SEVENTH FLOOR					902	gg	937	\$240,413	\$169
701	aa	689	\$152,337	\$125	903	jj	1492	\$402,680	\$270
702	gg	937	\$222,620	\$169	904	hh	1083	\$291,070	\$196
703	bb	833	\$195,205	\$151	905	kk	1460	\$415,300	\$264
704	ff	876	\$227,760	\$158	906	dd	1000	\$267,707	\$181
705	cc	854	\$222,040	\$154	907	ee	965	\$257,749	\$174
706	dd	1000	\$270,000	\$181	TO LIVE IN THE CLOUDS				
707	ee	965	\$255,729	\$174	1000	XX	5076	\$1,650,000	\$917

live urban





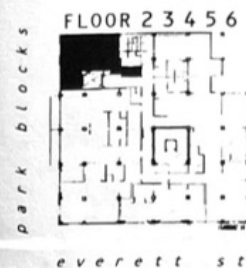
UNLESS NOTED OTHERWISE, ALL DRAWINGS ARE

: ONE INCH = 10 FEET

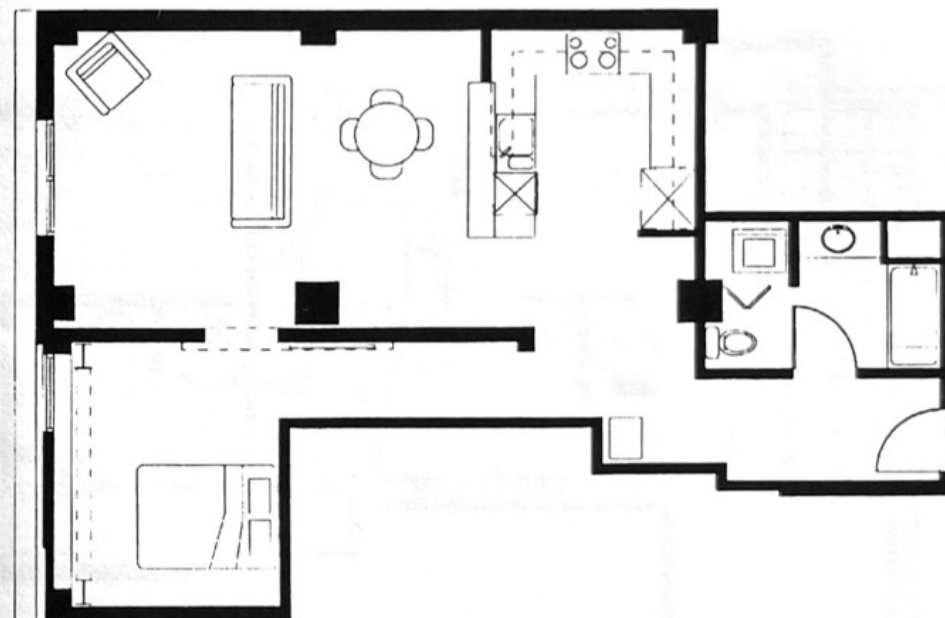
: NORTH IS UP !!

NOTE :

IN TIME, THINGS SOMETIMES CHANGE FOR THE BETTER. IDEAS, PEOPLE, UNIT AMENITIES AND UNIT SPECS. LIKEWISE, ENTERPRISE DEVELOPMENT RESERVES THE RIGHT TO MODIFY THE DESIGN AND ITS SPECIFICATIONS TO MAINTAIN OUR HIGH STANDARDS OF ARCHITECTURAL QUALITY AND EXCELLENCE.

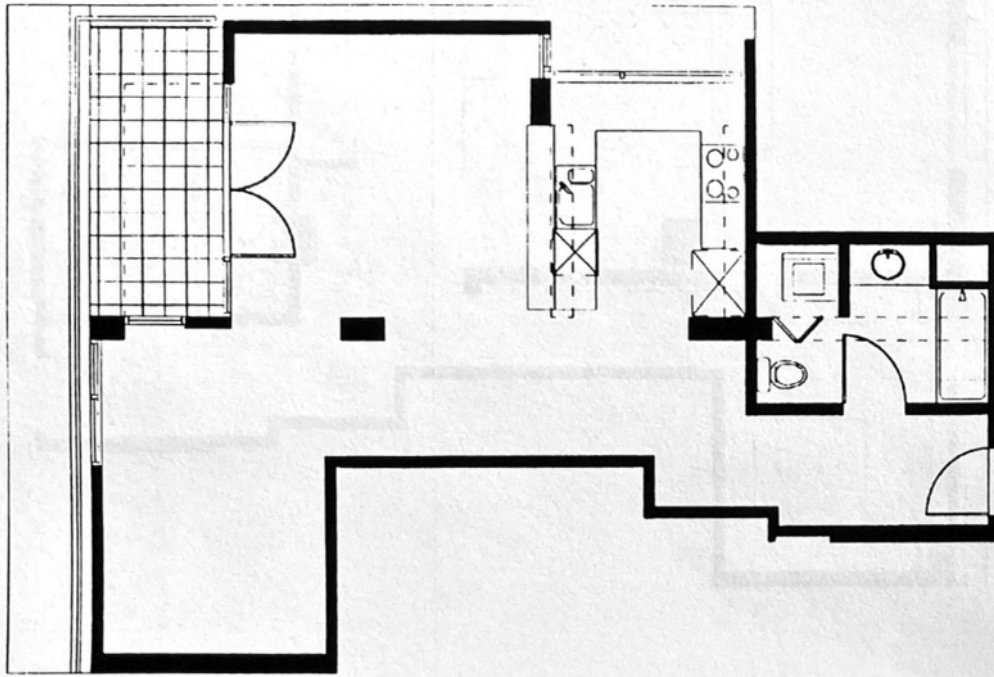


a

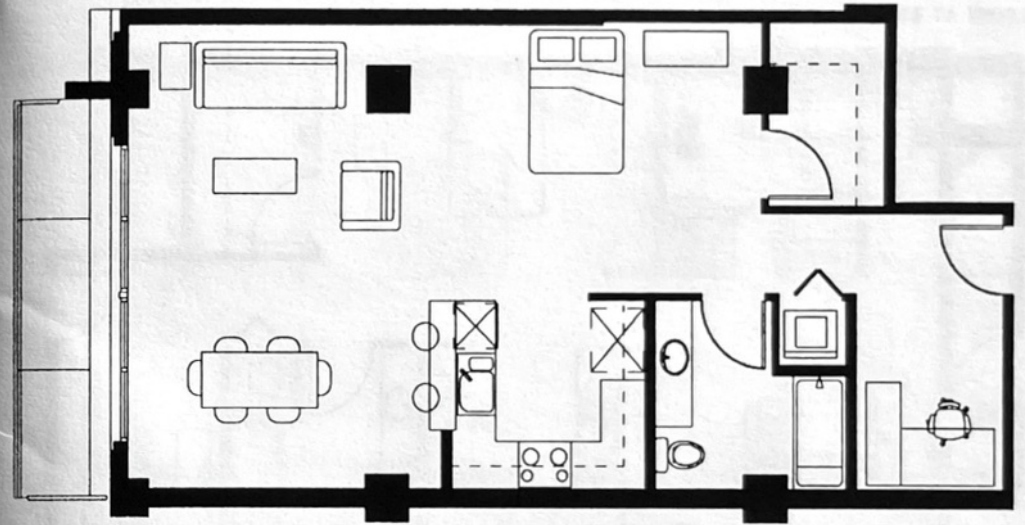
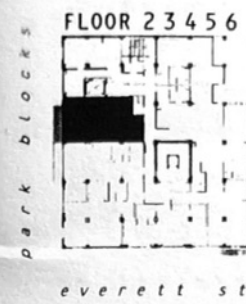


830 SQUARE FEET

aa



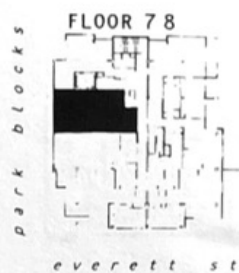
689 SQUARE FEET



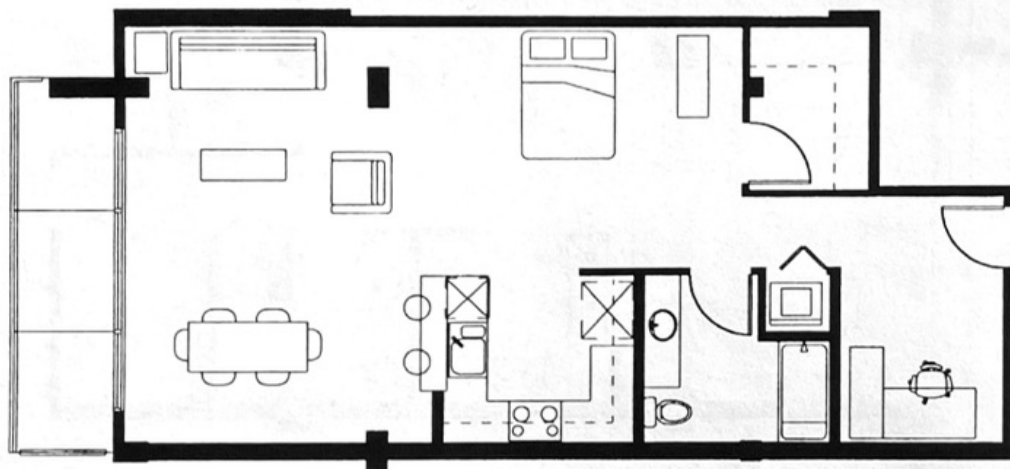
827 SQUARE FEET

b

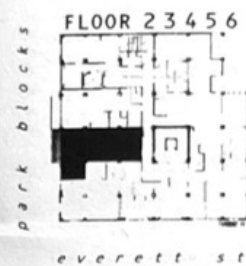
bb



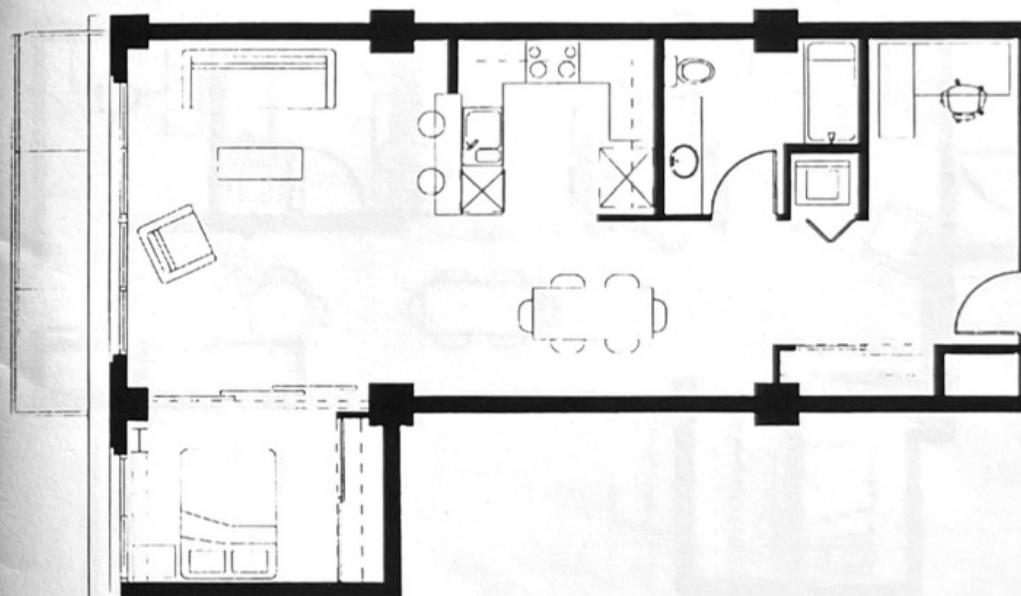
BALCONY AT 8TH FLOOR ONLY



833 SQUARE FEET



C

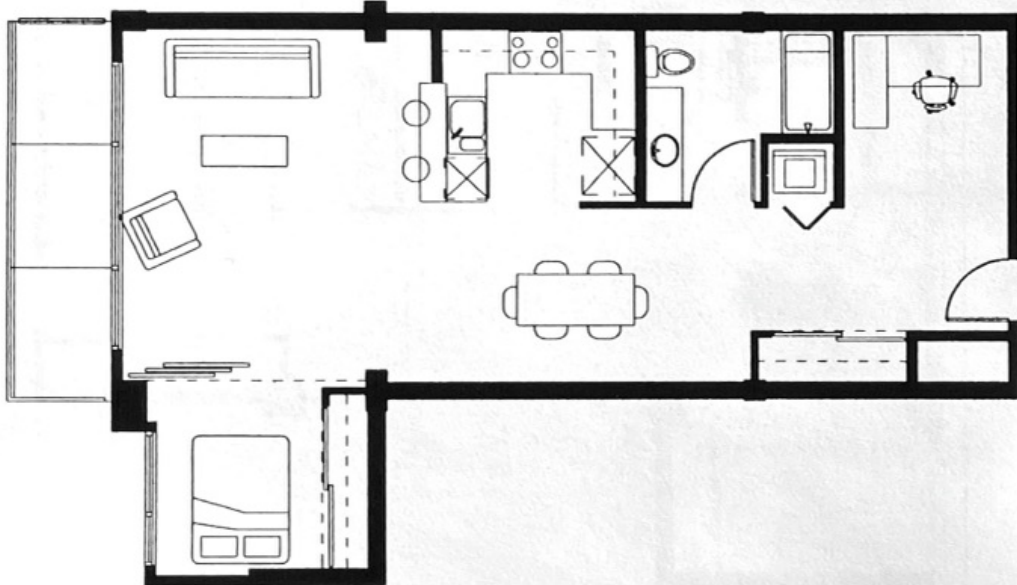


866 SQUARE FEET

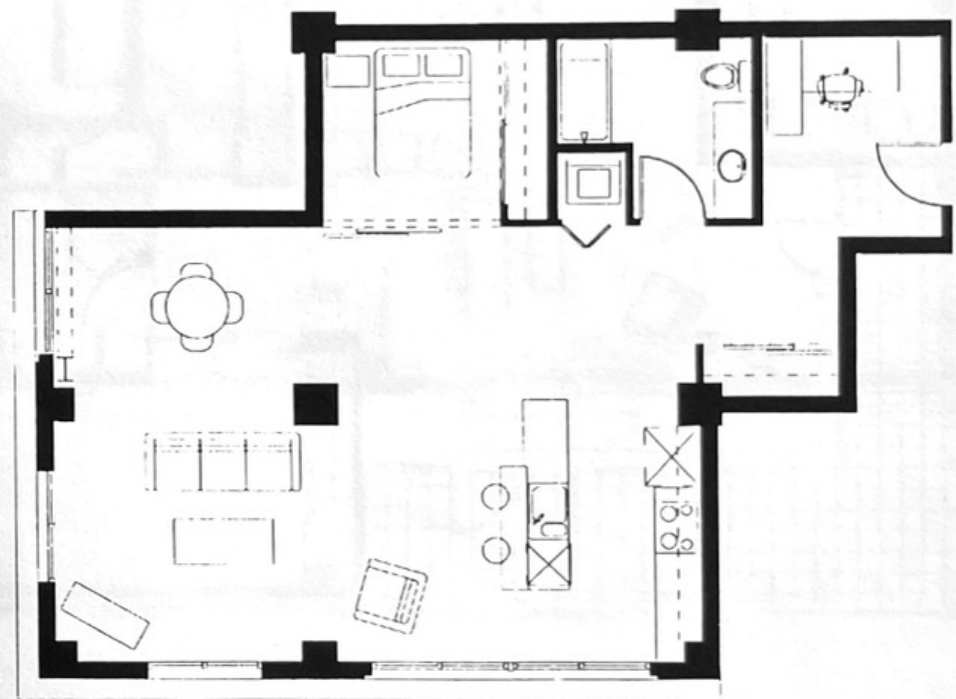
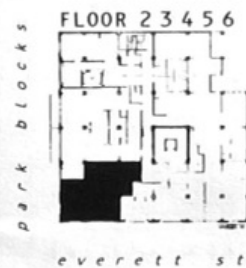
CC



BALCONY AT 8TH FLOOR ONLY



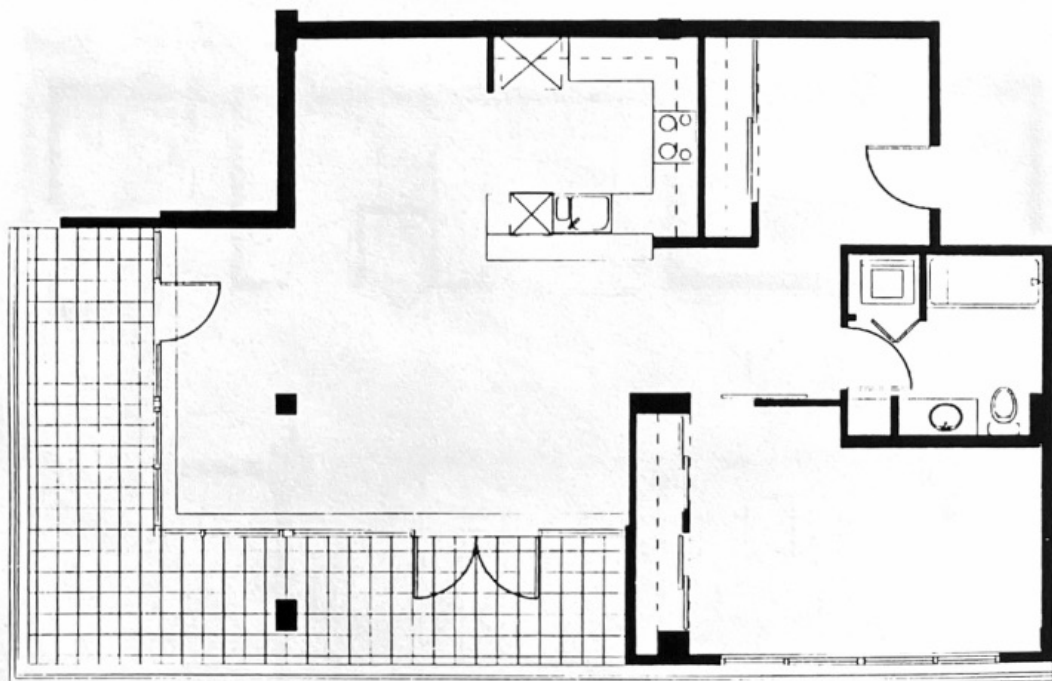
854 SQUARE FEET



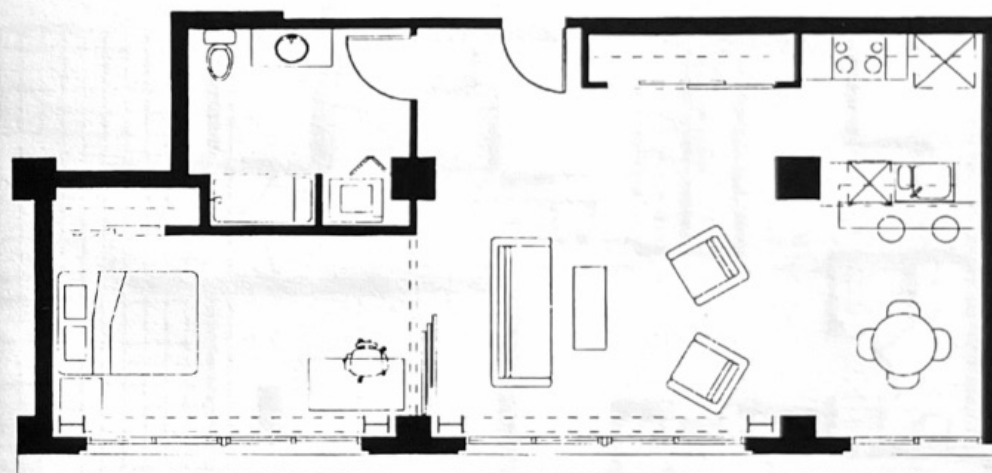
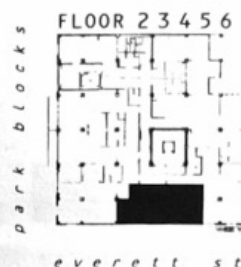
998 SQUARE FEET

d

dd



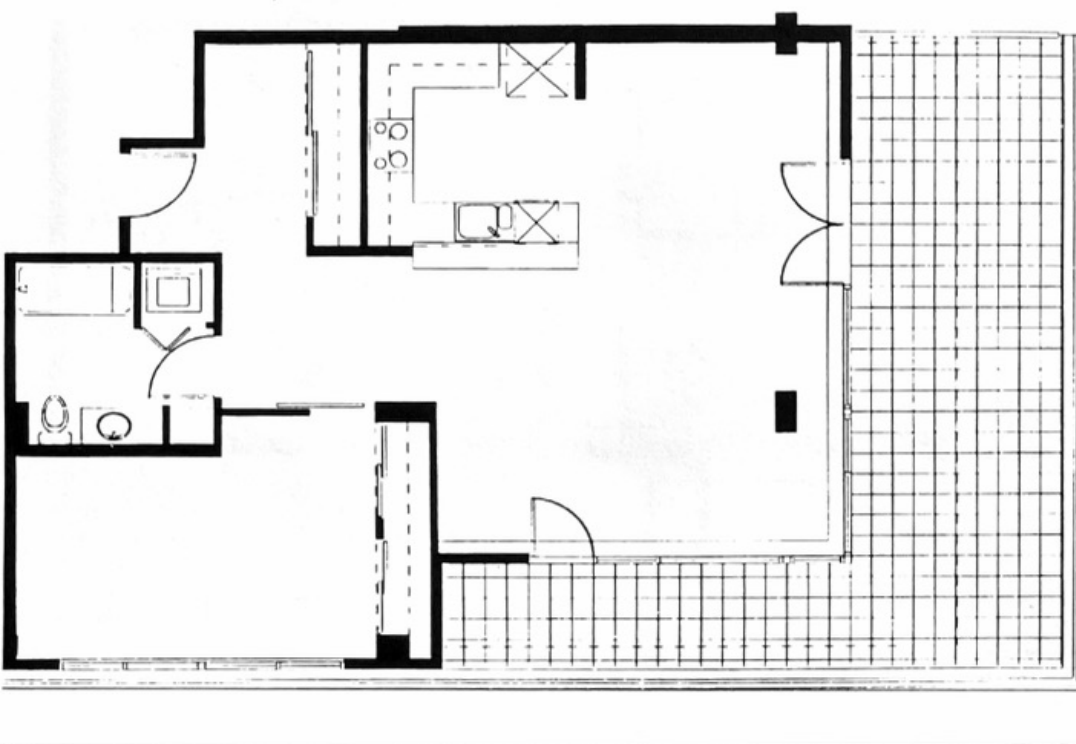
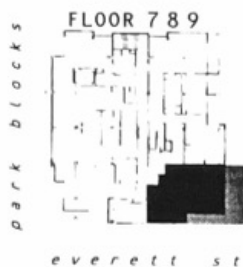
1000 SQUARE FEET



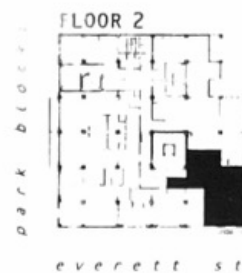
833 SQUARE FEET

e

ee



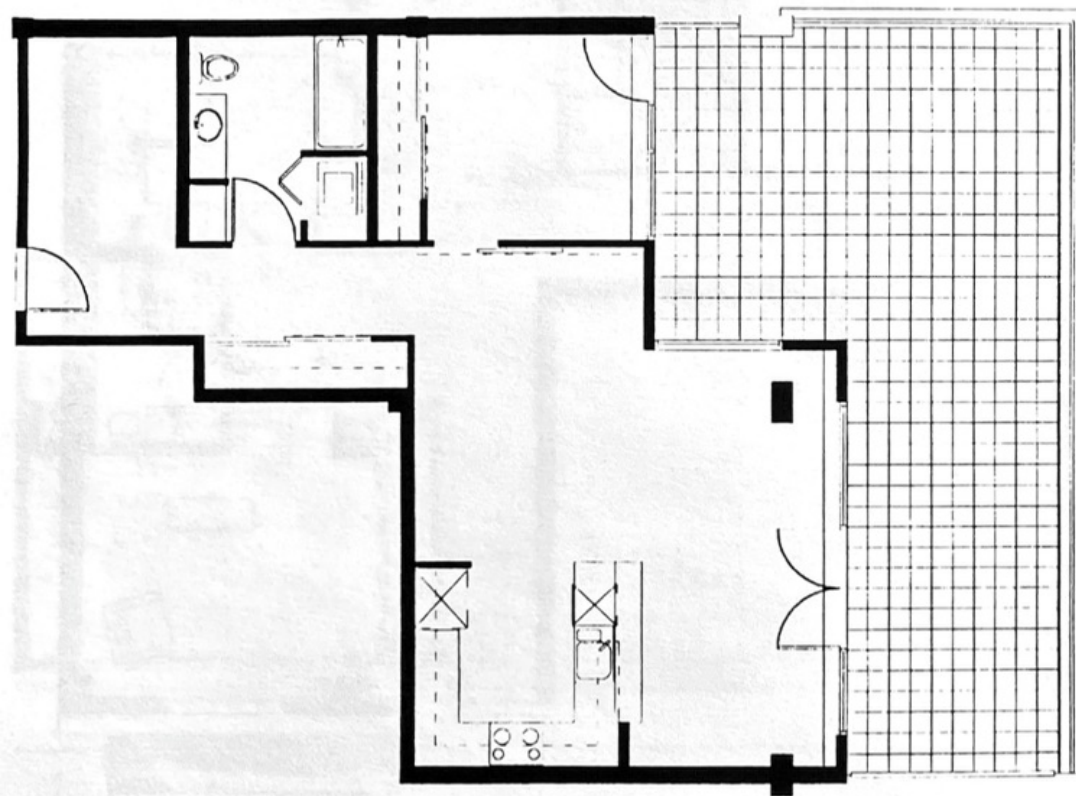
965 SQUARE FEET



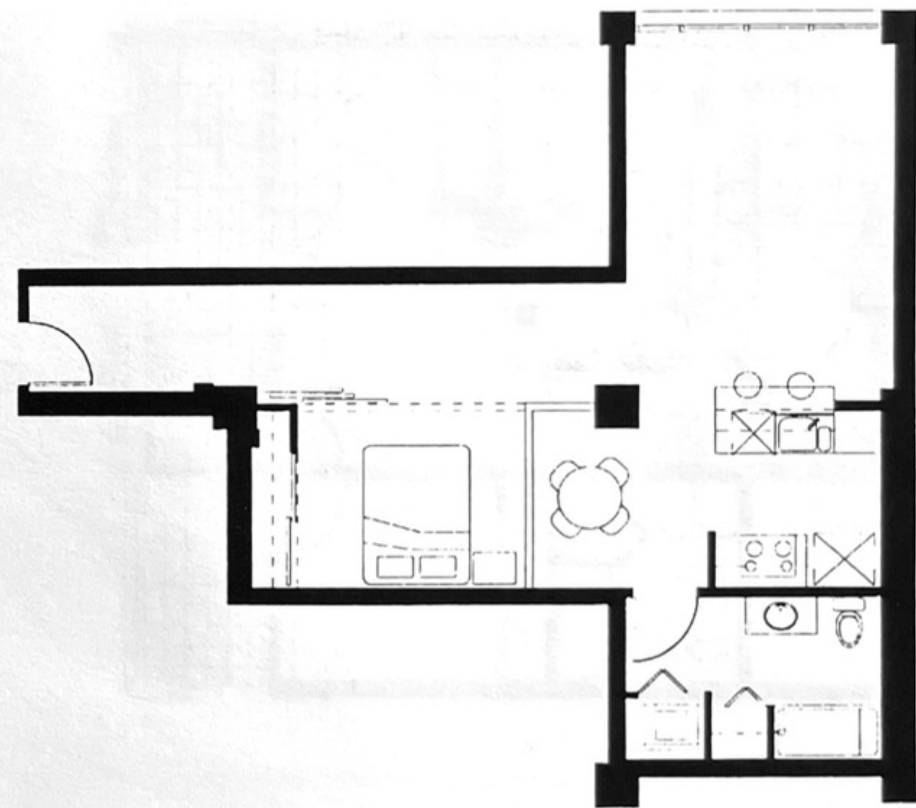
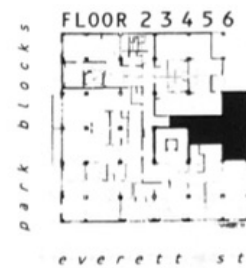
993 SQUARE FEET

f

ff



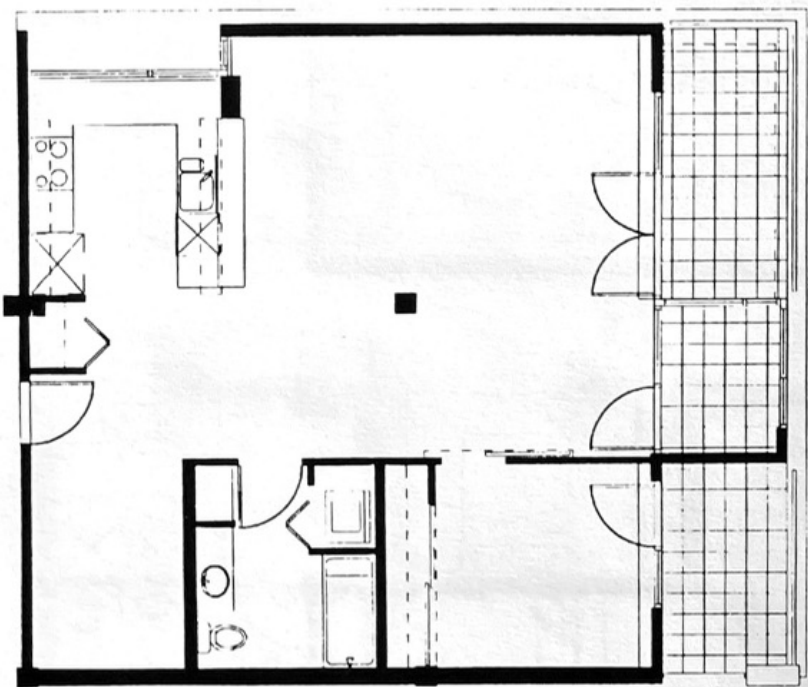
876 SQUARE FEET



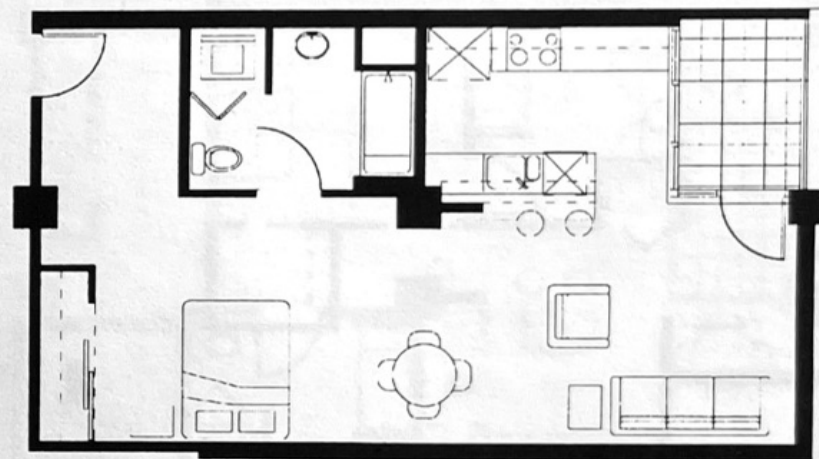
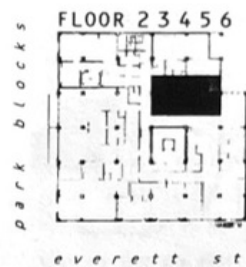
790 SQUARE FEET

g

gg



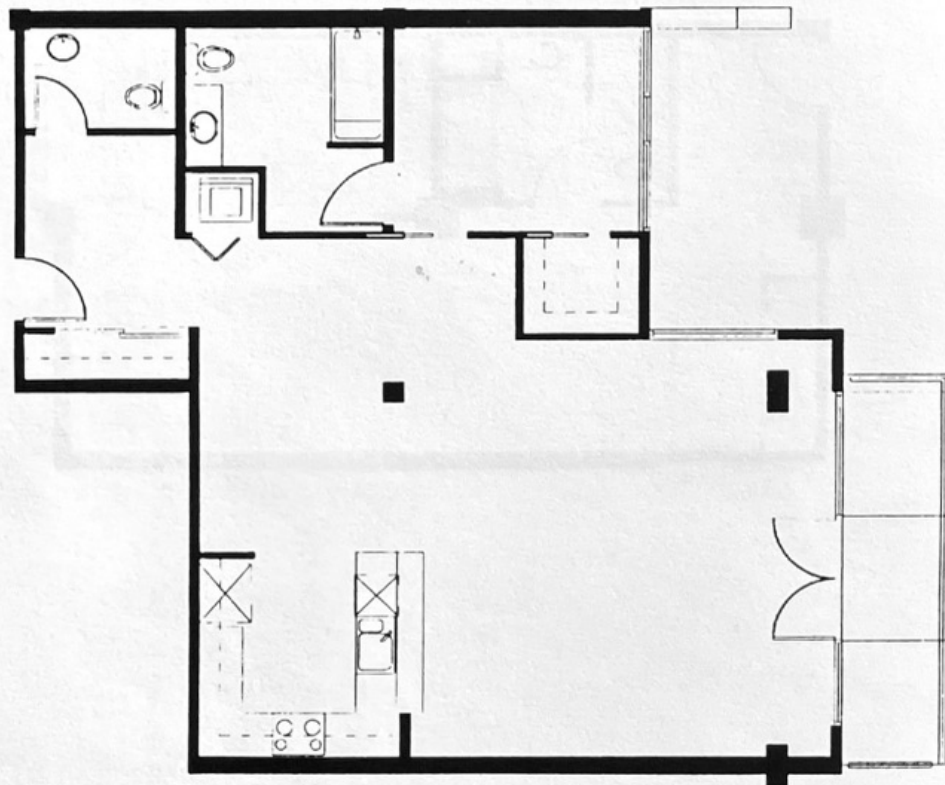
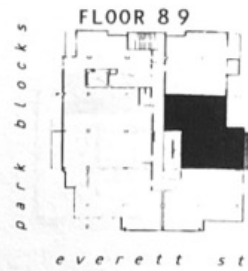
937 SQUARE FEET



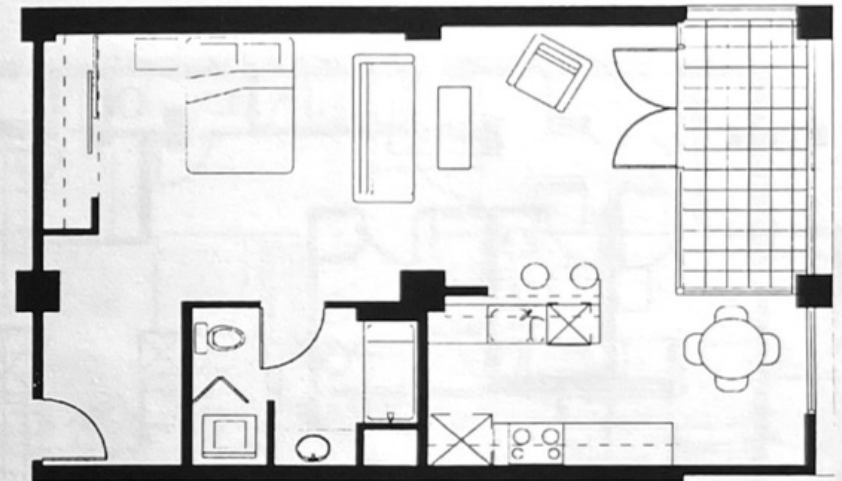
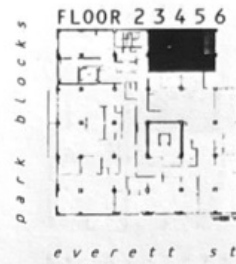
684 SQUARE FEET

h

hh



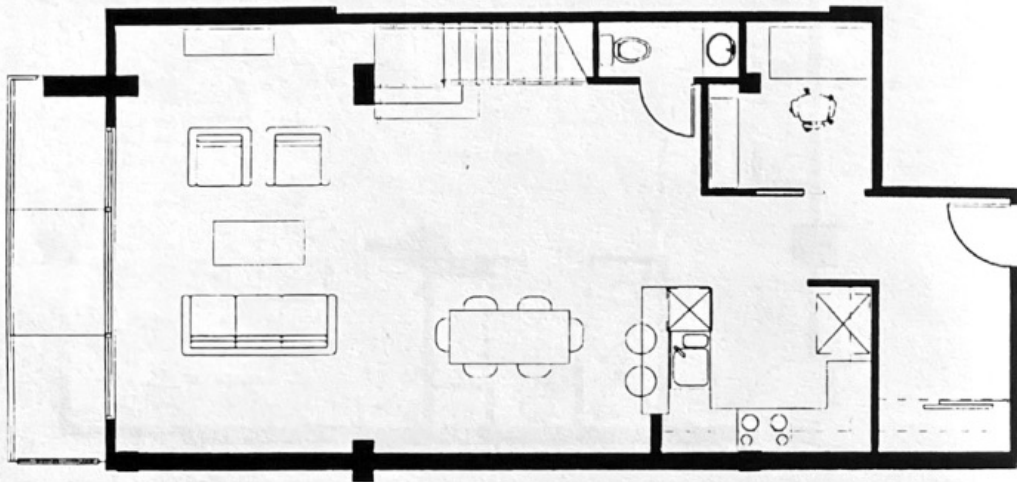
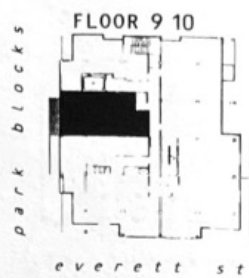
1083 SQUARE FEET



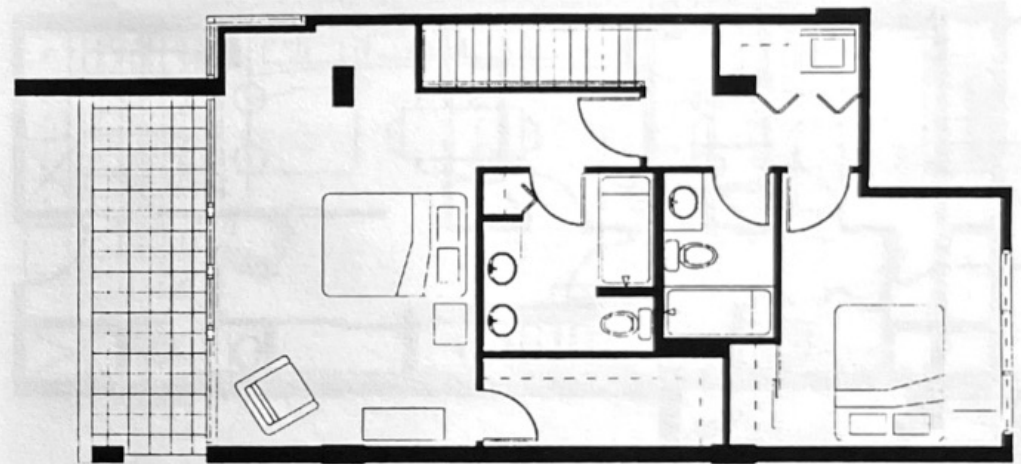
710 SQUARE FEET

j

jj



LEVEL 1
833 SQUARE FEET

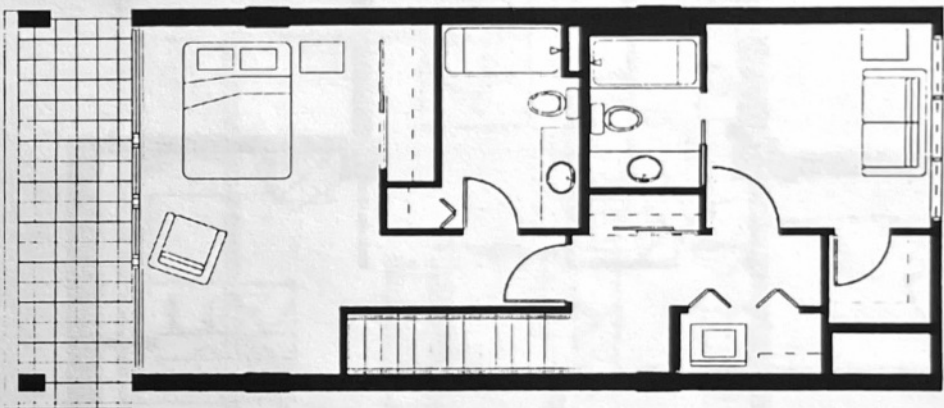
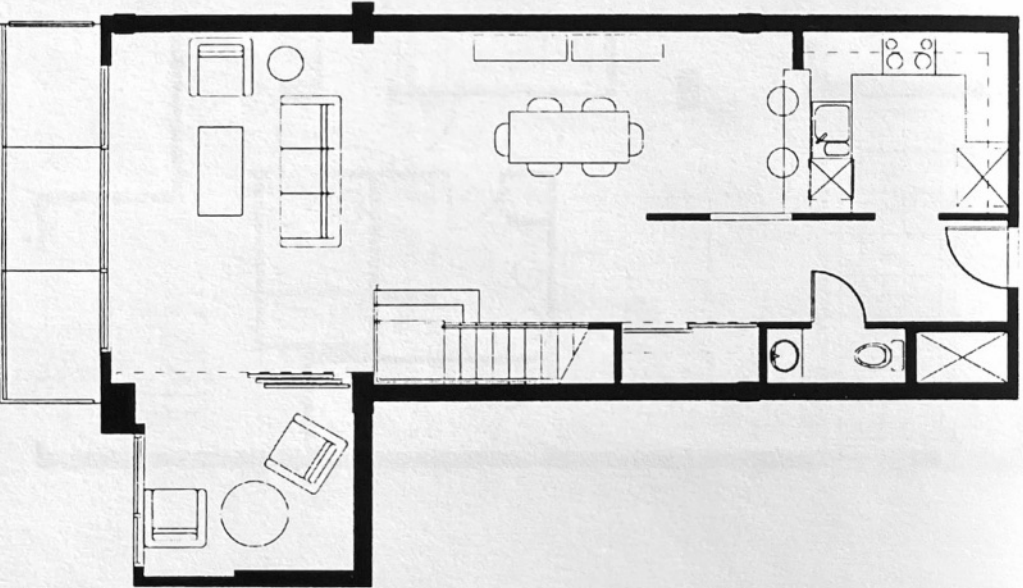
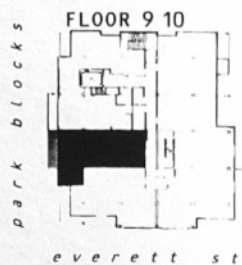


LEVEL 2
659 SQUARE FEET

1492 SQUARE FEET TOTAL



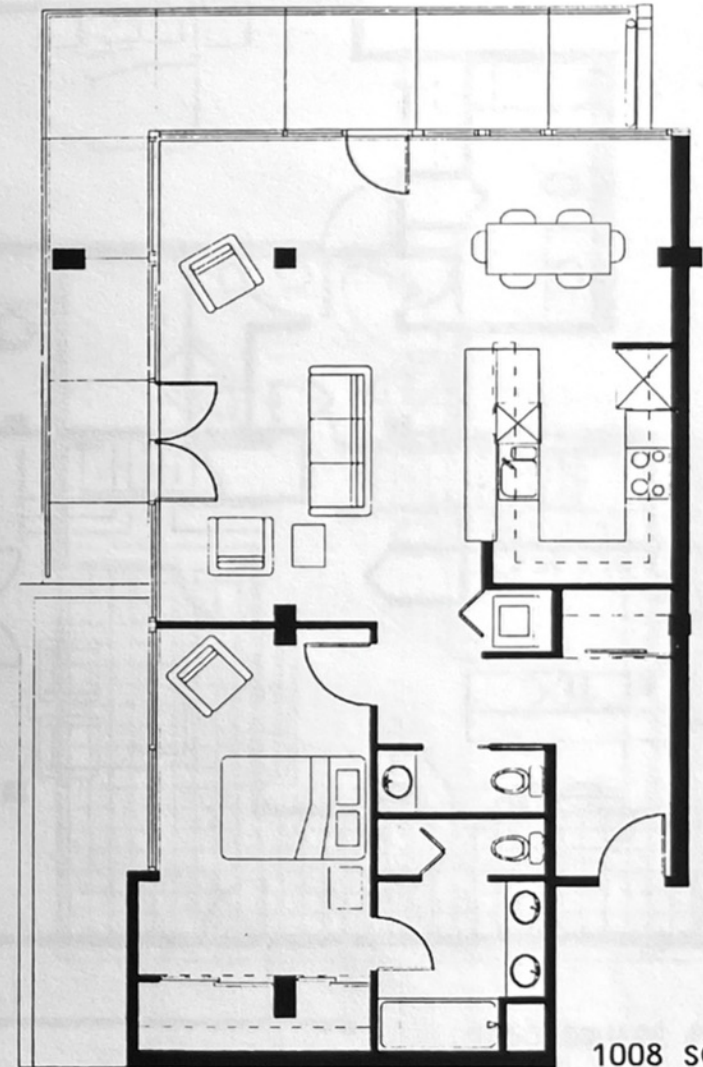
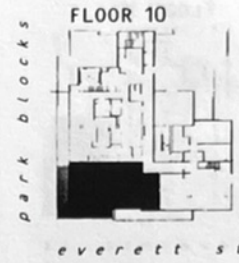
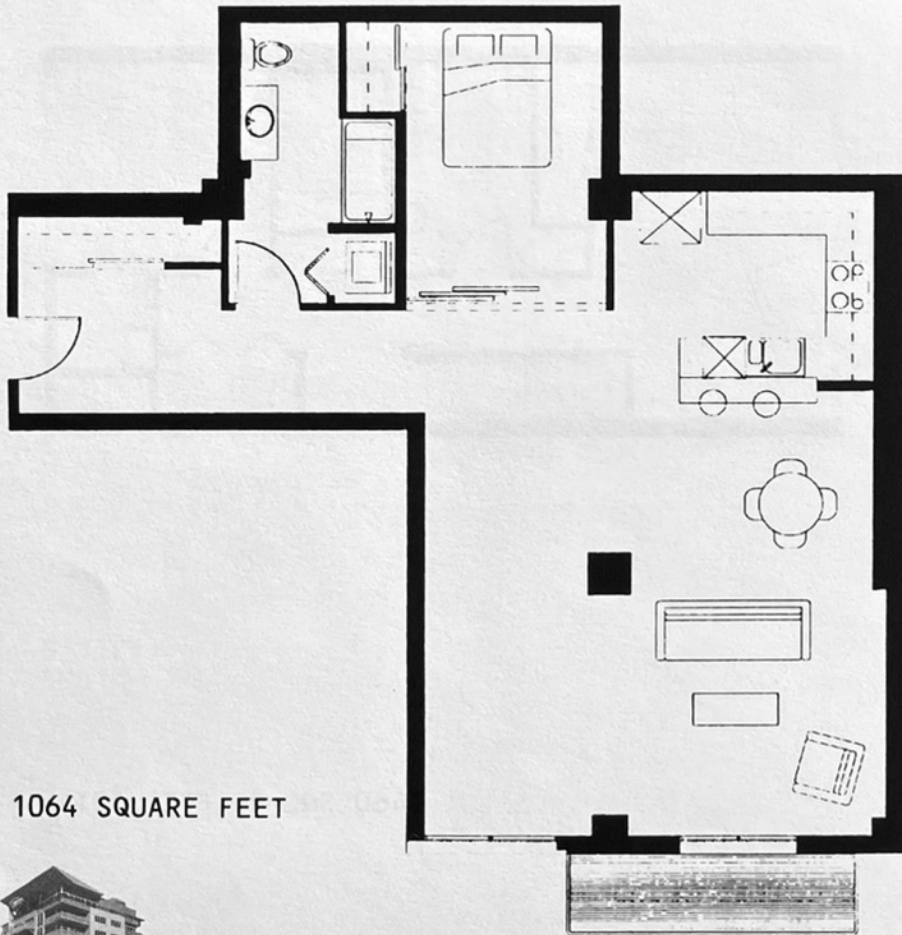
kk



1460 SQUARE FEET TOTAL



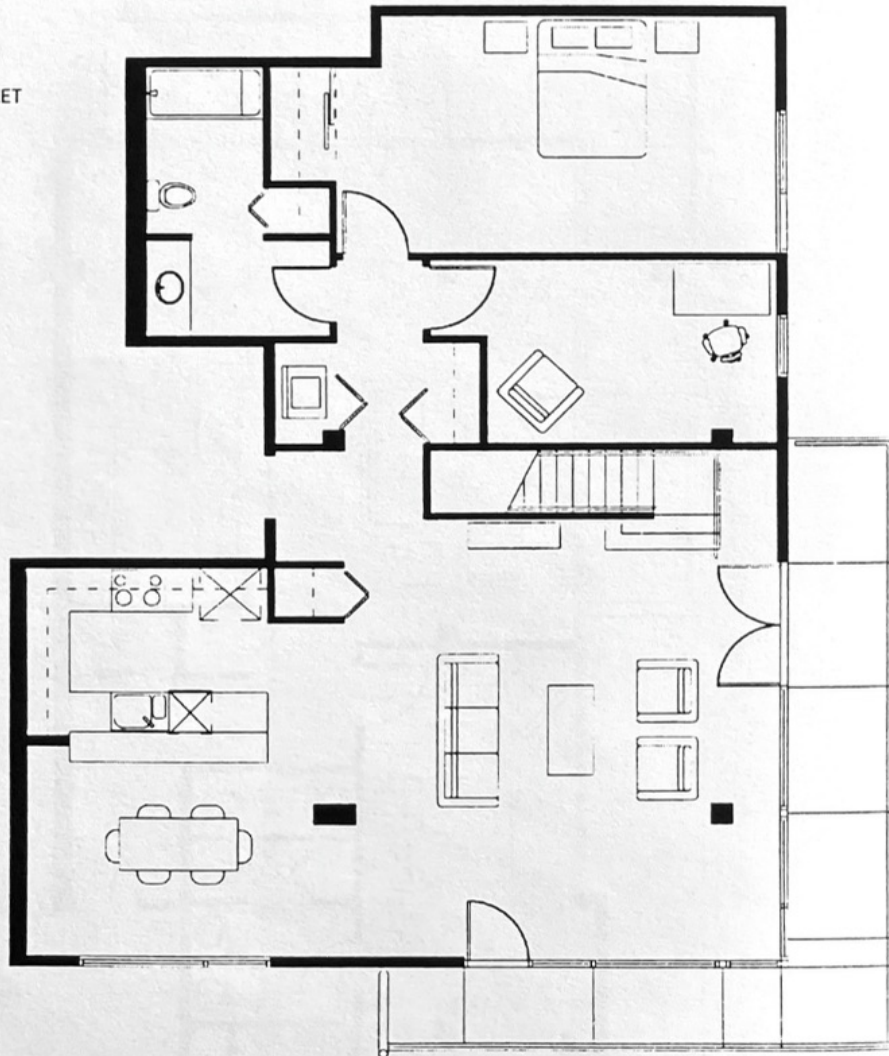
K



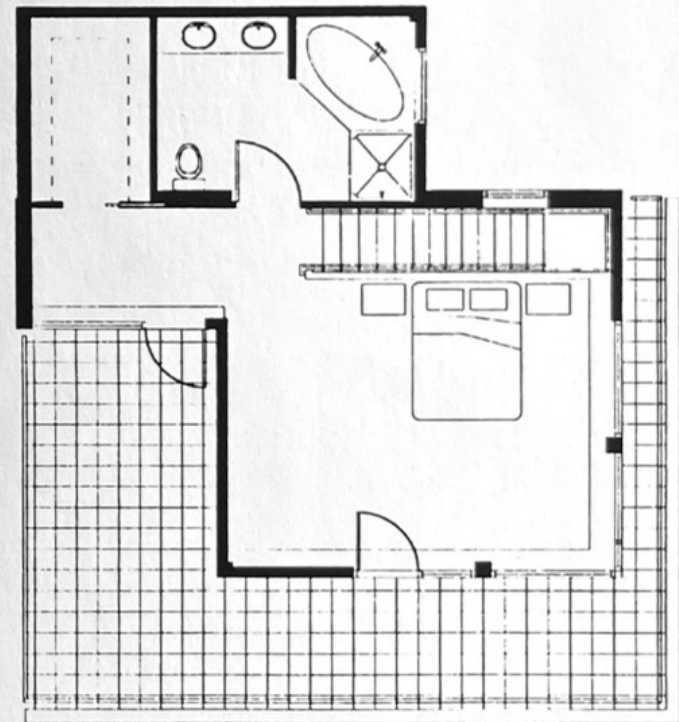
mm



LEVEL 1
1332 SQUARE FEET



LEVEL 2
518 SQUARE FEET



1850 SQUARE FEET TOTAL

